

1 WELCOME

Introduction

Adur District Council (ADC) is seeking to redevelop the existing Buckingham Park South Pavilion.

The Pavilion is located at the south side of Buckingham Park, Shoreham-by-Sea, accessed from Upper Shoreham Road.

The Pavilion will incorporate:

- Cafe
- Sports Clubhouse
- Public Toilets
- New access paths and landscaping



Aerial view of Shoreham-by-Sea

Briefing Requirements:

- Replacement Cafe facility - initial target of 60 covers (internal and external terrace).
- Uses that support each other.
- Overlooking the play park and sports fields.
- Appearance fitting for the park.
- Robust and easy to maintain.
- Fully accessible with 'Changing Places' accessible WC.
- Vandal and arson proof facade materials and elements.
- Sustainable design.
- Inherent flexibility and futureproofing considered.



Existing Pavilion - north elevation



Existing Pavilion - west elevation



Existing Pavilion - south elevation



Aerial view of Buckingham Park

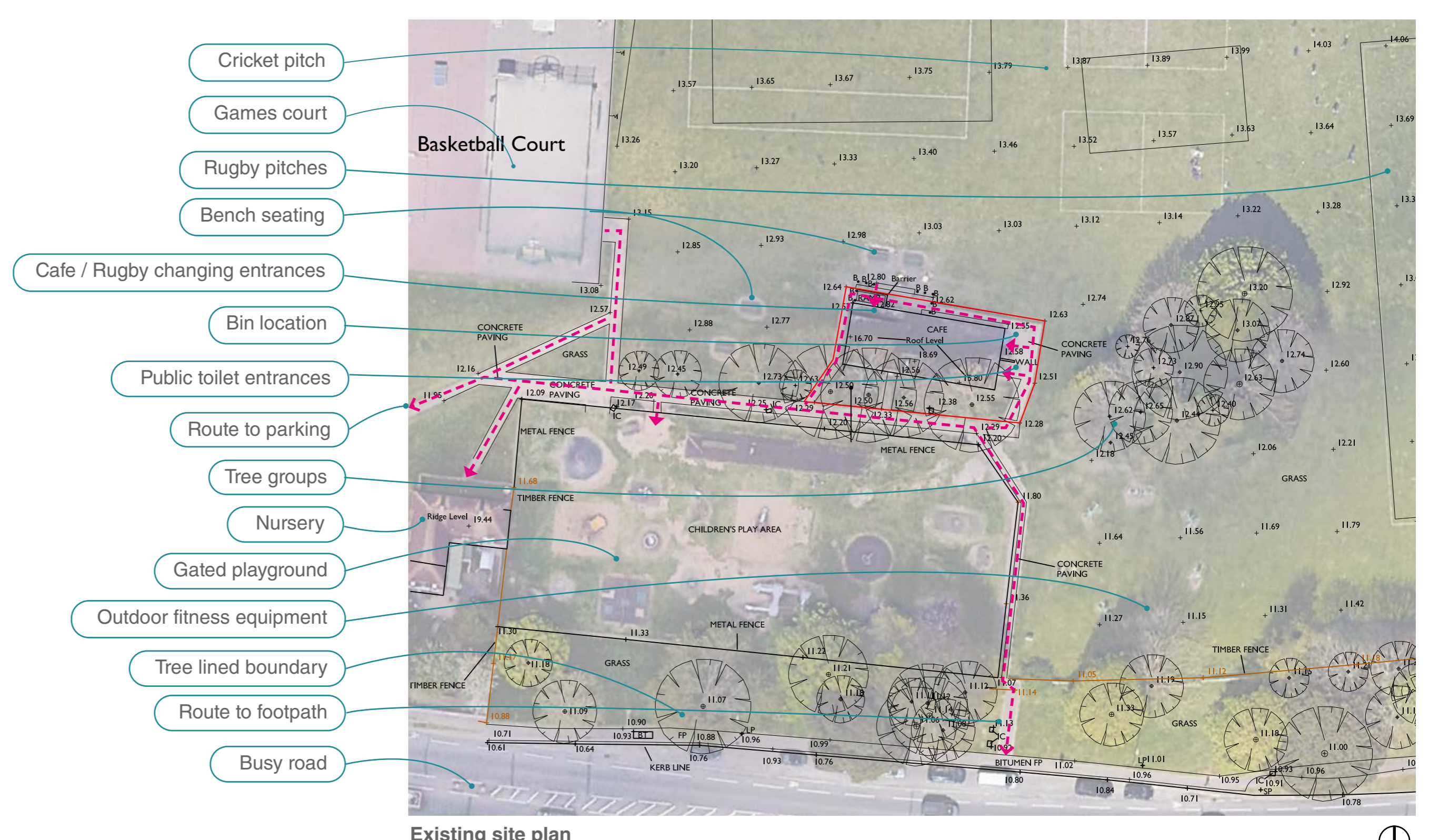
Existing Pavilion

The existing Pavilion is outdated and space provision for the uses does not meet modern standards.

The building form is single storey with a flat roof and façades clad in brick and green painted timber. A clock tower element adds additional height.

It nestles below a tree canopy between the children's play park to the south with sports pitches and majority of the park to the north.

A tree survey of the nearby mature sycamore trees has been carried out to determine the root protection zones to ensure they are safeguarded from any development.



Existing site plan

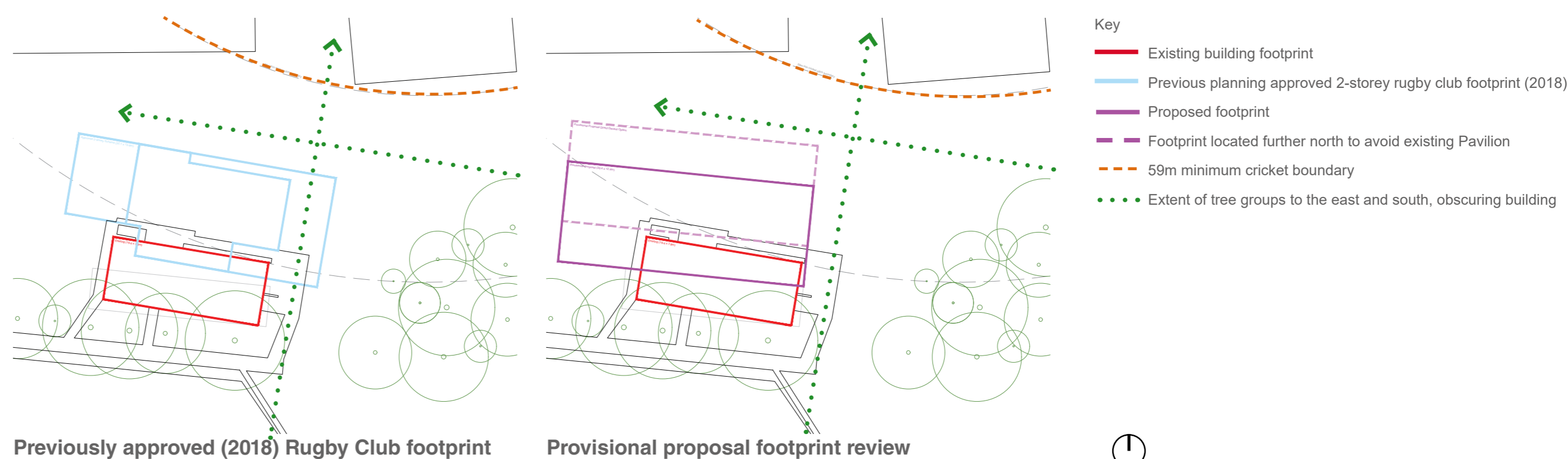
2 APPROACH

How Big Will It Be?

The size of the proposed building has been set by carefully establishing the requirements of the three proposed uses from precedents and statutory guidance, whilst ensuring flexibility. The overall footprint measures approximately 37m x 12m and total GIA 335m² (3,770 sqft.)

A single-storey form is proposed to maintain a low profile to the south of the park, having the trees as the primary backdrop.

The building will have a pitched roof for ease of maintenance and the simple portal frame ensures future flexibility.



Precedent - Henfield Scout Hut



Precedent - Peacehaven Gateway Cafe

Why this location?

It is proposed to replace the existing Pavilion. The proposed footprint sits north-west of the existing to move away from the mature trees, whilst maintaining sufficient separation from the sports pitches. The building does not extend further north than the tree group to the east.

By maintaining the cafe element to the west elevation, it provides the cafe with an outlook over the sports pitches, the playground and a west facing terrace to enjoy afternoon summer sun.

The Sports Clubhouse is located to the east with an access and outlook towards the sports pitches.

The Public Toilets are located on the south elevation to be near to the children's play park.



Site plan - proposed building components and their relationship to the trees (green dash circles) and existing building footprint position (black line)

Context

The site is defined by open parkland and the veteran sweet chestnut trees. The building is designed to sit comfortably within this setting in both scale and appearance.

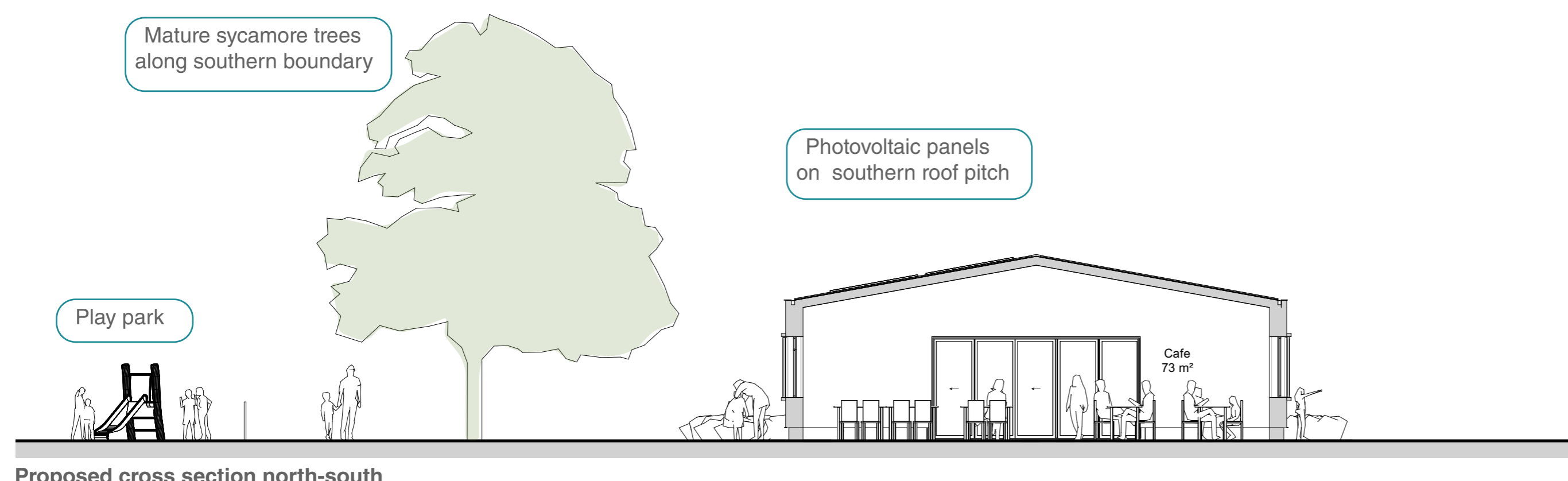
The building will be carefully integrated into the park setting with planting to be reviewed with the Park team to ensure bio-diversity net gain.

Sustainability

The scheme will seek to be as green as possible in line with the Council's declared climate emergency and target to be carbon neutral by 2030.

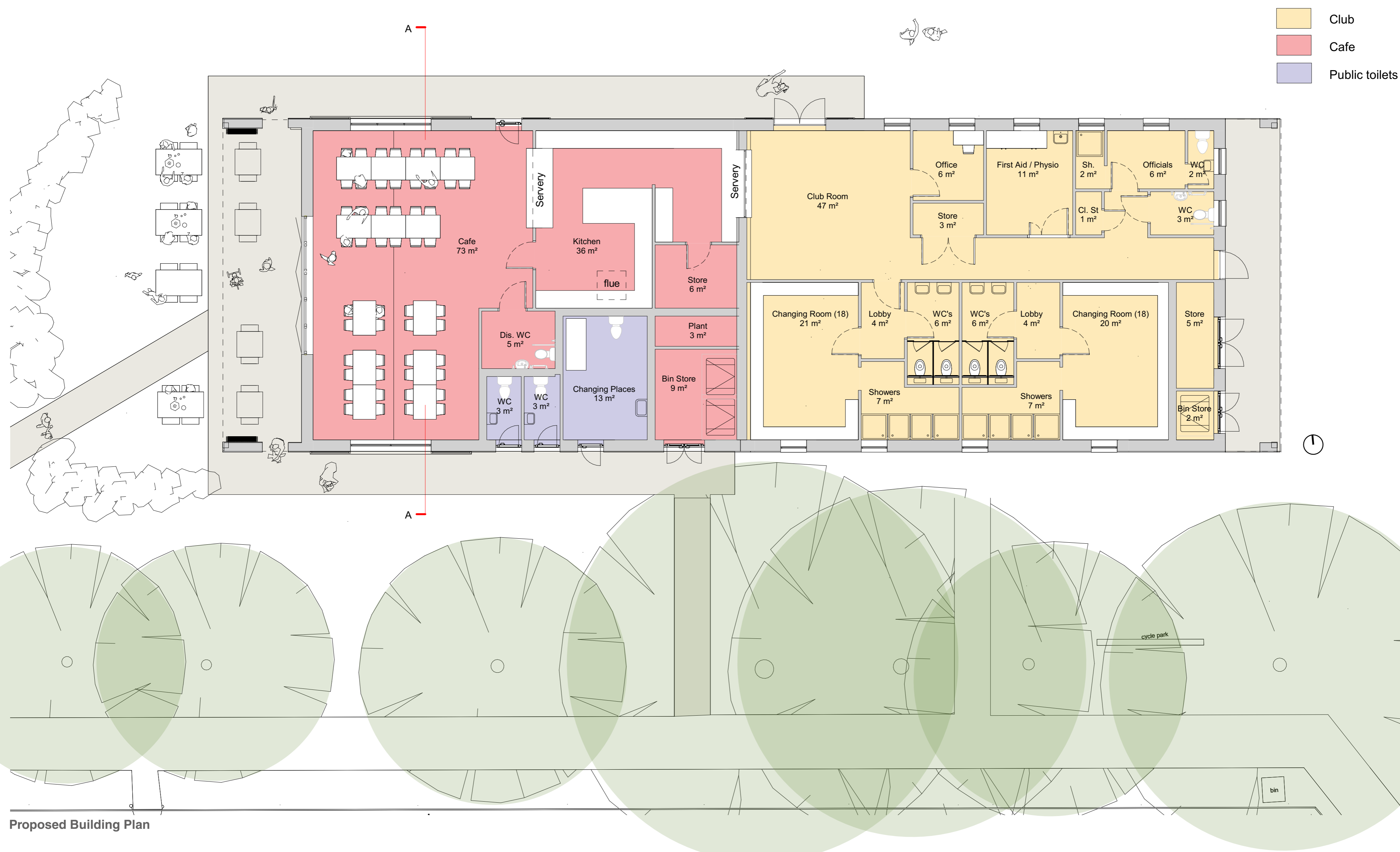
The scheme will at least perform to the updated, more stringent, building regulations for energy consumption, thermal performance, and air tightness. The development will be gas free and use renewable technologies such as Air Source Heat Pumps and Photovoltaic Panels.

BREEAM 'Very Good' is targeted as a sustainability standard.



Proposed cross section north-south

3 LAYOUT



Proposed Building Plan

Building Layout

- Clear separation of uses.
- Toilets visible from play park with clear access from new path.
- Cafe visible from the park, play area and west parking.
- Cafe terrace benefit from afternoon sunshine.
- Proposed link between kitchen and clubhouse to give flexibility.

Building Detailing

- Level access.
- Brick base.
- Metal framed windows and doors, with shutters for security.
- Hidden gutters and rainwater pipes to prevent damage.



Detail precedent images



Illustrative view of proposed Pavilion from the north-west

4 APPEARANCE

What Will It Look Like?

It was very important for ADC for the Pavilion to sit comfortably within the park setting and be 'of Shoreham,' not an architectural intervention that would stand out.

Existing structures within the park are typically light weight with timber cladding painted white, cream, or dark green.

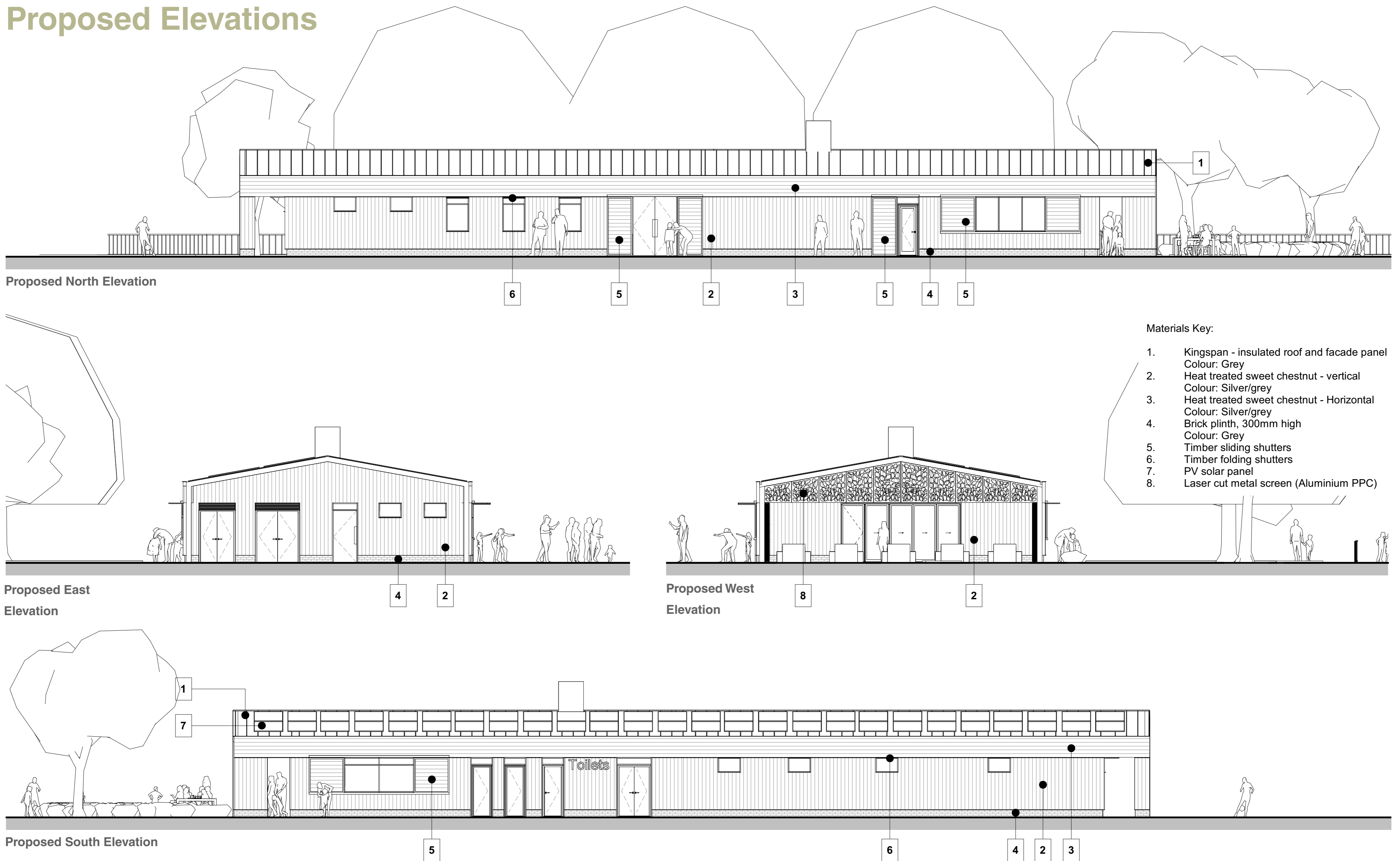
The mature trees, particularly the veteran sweet chestnut trees are extremely important to the park.

The proposed Pavilion provides a simple aesthetic with a timber (or timber look) cladding and metal standing seam roof, to echo the natural materials and colour tones found in the nature of the park.

Shutters, in keeping with the aesthetic, protect the window and door openings from vandalism out of hours.

Decorative screens enclose the cafe terrace when not in operation, providing a secure area to store external furniture.

Proposed Elevations



Decorative Security Screens

Laser cut screens enclosing the covered terrace visually tie the Pavilion into the park. The design currently shows a tree effect, but this could potentially evolve to incorporate a community art design that provides the Pavilion with a unique identity.



Screen precedents



Illustrative views of proposed Pavilion from the south-west with screen open (top image) and closed (bottom image)

5 NEXT STEPS

Thank you for attending today's event

Once you have had the chance to look through the proposals, please do speak to us if you have anything on your mind or if you have any questions.

We are genuinely interested to know what you think. We welcome any comments you have about any aspect of the proposals, so please do fill in one of the feedback forms provided.

Your views are important. We will consider all comments received.

Please also let us know your details so we can contact you again in the future.

If you haven't already, please ensure you have signed the register at the entrance.



TIMELINE

