

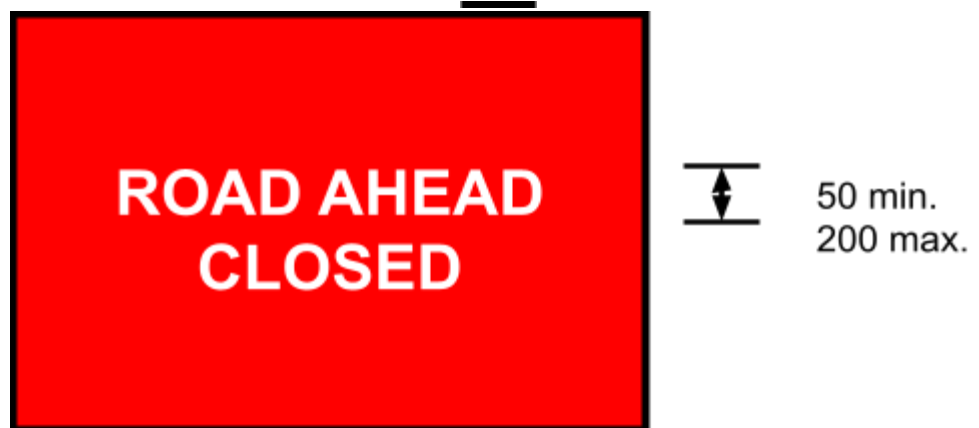
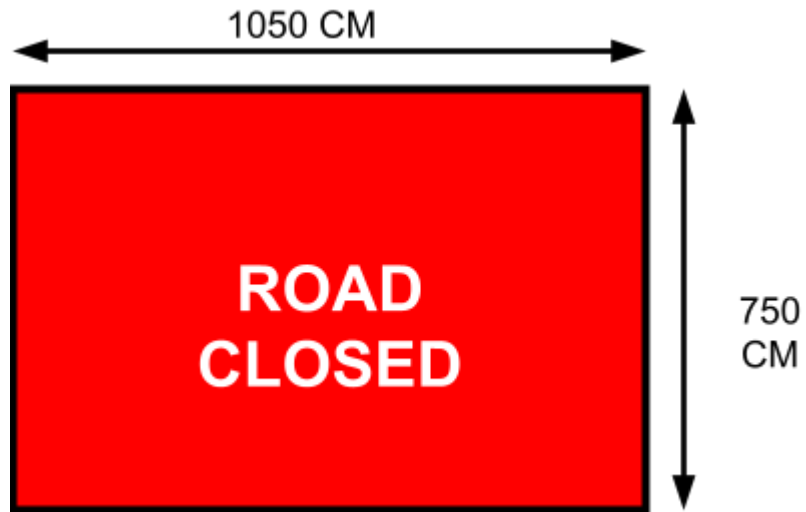
# **SUSSEX POLICE**

**WEST SUSSEX DIVISIONAL PLANNING OFFICE**

## **ROAD CLOSURES - SIGNS**

**MISCELLANEOUS WARNING, INFORMATORY, REGULATORY  
AND TEMPORARY DIRECTIONAL ROAD SIGNS.**

MISCELLANEOUS WARNING, INFORMATORY, REGULATORY  
AND TEMPORARY DIRECTIONAL SIGNS



Suggested Information/Advance Warning signs

Littlehampton Bonfire

NO WAITING  
FROM 1830 HRS  
Saturday 28<sup>th</sup> October

Findon Sheep Fair

All Traffic Please Use  
SCHOOL HILL

ADVANCED WARNING

Littlehampton Carnival  
Delays and Road Closures  
Between <> hrs & <> hrs  
<Date>

## Please Note:

All signs placed on the public highway must accord with the Traffic Signs Regulations and General Directions 1994. This details the size of the signs, size of the letters and arrows, colours and reflectivity i.e. Class 2.

The signs to be placed alongside the highway need to be free standing, in a suitable metal 'A' frame which may need to be weighted in inclement weather.

Local councils may have a limited number of signs and barriers for special events, this is a chargeable service. Alternatively various 'tool hire' companies can provide signs.

Further Advice can be obtained from:

### Sussex Police

Operational Planning Team  
wsx.events@sussex.pnn.police.uk  
101 ext 582506

### West Sussex County Council

Area Highway Office  
01243 642105

### Adur and Worthing Councils

Road Closures  
road.closures@adur-worthing.gov.uk  
01903 221486

Commercial Waste  
commercial.waste@adur-worthing.gov.uk  
01903 851729