

WORTHING
BOROUGH
COUNCIL

WORTHING
LOCAL
DEVELOPMENT
SCHEME

2025 - 2028



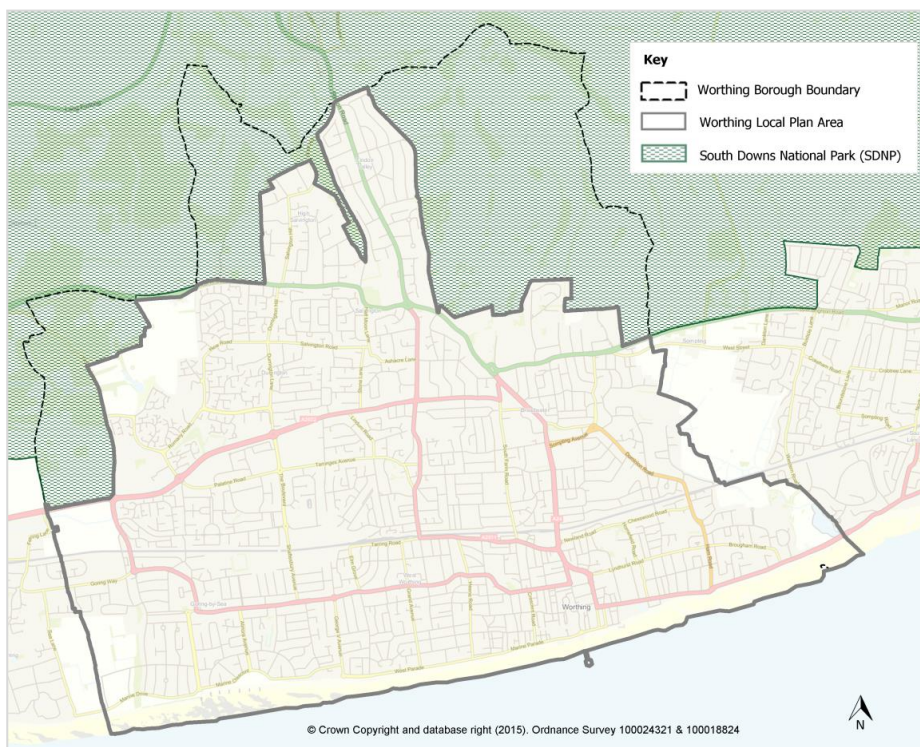
WORTHING BOROUGH
COUNCIL

1 Introduction

- 1.1 Local planning authorities are required to prepare a Local Development Scheme (LDS). The LDS is a public 'project plan', or in other terms, a timetable identifying which planning policy documents will be produced and when. It establishes a three-year work programme that allows stakeholders to understand the current and proposed planning policy framework for the area and the associated resource implications. This version of the LDS covers the period 2025-2028 and will supersede the previous version published by the council in 2021.
- 1.2 The Worthing Local Plan was adopted in March 2023. National planning policy requires local planning authorities to review local plans at least once every five years, and that policies should then be updated if necessary. The Planning Policy team is shared with Adur District Council and is currently preparing an update to the Adur Local Plan. Therefore, it is not anticipated that Worthing Borough Council will commence preparation on any development plan documents until the end of the period covered by this LDS. Where resources allow, additional planning guidance documents may be produced. However, these are not included in this LDS.
- 1.3 In February 2025 the government approved a bid from West Sussex County Council, East Sussex County Council and Brighton & Hove City Council to create a combined mayoral authority for Sussex. This will be followed by reorganisation of all local government districts and boroughs in Sussex. Therefore, the timetable for preparing a new Worthing Local Plan is likely to change.

Geographical coverage of the Worthing Local Plan

- 1.4 Worthing Local Plan covers the parts of the borough, that are not within the South Downs National Park.



The Worthing Development Plan

- 1.5 On publication of this LDS in 2025, the Development Plan consists of:
- [Worthing Local Plan 2023](#)
 - [West Sussex Joint Minerals Plan 2018, partially revised 2021](#)
 - [West Sussex Waste Local Plan 2014](#)
- 1.6 The Worthing Local Plan was adopted on 28 March 2023. It covers the period 2020-2036. The Worthing Local Plan sets the strategic development and land-use priorities for Worthing (outside the South Downs National Park) and contains the policies against which development management decisions within that area will be made.
- 1.7 West Sussex County Council is responsible for preparing statutory land use plans for minerals and waste. They have worked in partnership with the South Downs National Park to produce the West Sussex Joint Minerals Plan, adopted by both authorities in July 2018. This covers the period up to 2033. This was partially revised in 2021 following work in relation to soft sand. The county council has also prepared a Waste Local Plan jointly with the South Downs National Park Authority (adopted April 2014) which covers the period up to 2031.

Supplementary Planning Documents

- 1.8 A Supplementary Planning Document (SPD) provides greater details on the Council's policies set out in the local plans or other higher level planning documents. They provide additional guidance on local planning matters.
- 1.10 Whilst SPDs are not examined by an Inspector, they are still subject to a process of consultation and engagement with relevant parties. Although they are not required to have a specific link or 'hang off' a local plan, they must be consistent with national planning policy. In most cases an SPD does not require a Sustainability Appraisal.
- 1.11 SPDs can take a number of forms but they can generally be categorised into two broad forms:
- area-based documents that include masterplans and development briefs which deal with specific parcels of land
 - topic-based documents which provide additional information on a specific local issue
- 1.12 On publication of this LDS in 2025, Worthing Borough Council has adopted the following SPDs:
- [Developer Contributions \(2015\)](#)
 - [Guide to Residential Development \(2013\)](#)
 - [Tall Building Guidance \(2013\)](#)
 - [Sustainable Economy \(2012\)](#)
 - [Space Standards \(2012\)](#)

Other planning guidance

- 1.13 Worthing Borough Council has also produced guidance on a range of planning matters. These have not been formally adopted as SPDs. However, they are regarded as being a material consideration in the determining of planning applications:

- [Worthing Planning and Climate Change Checklist \(2023\)](#)
- [Extending or altering your home](#)

2 Worthing Local Plan timetable

- 2.1 It is anticipated that the only development plan document to be produced within the next three-year period will be the review of the Worthing Local Plan. This will not commence until 2028 and will be dependent on the outcome of local government reorganisation in Sussex.

Scoping and early participation	March 2028 – June 2028
Gateway 1	July 2028
Visioning and strategy development	July 2028 – September 2028
Evidence gathering and drafting the plan	July 2028 – March 2029
Public consultation on draft plan	May 2029 – June 2029
Further evidence gathering and preparing the submission plan	July 2029 – December 2029
Gateway 2	October 2029
Public consultation on submission plan	February 2030 – March 2030
Gateway 3 and submission	June 2030
Examination	July 2030 – November 2030
Adoption	December 2030