

WORTHING BOROUGH COUNCIL

DRAFT LOCAL PLAN 2016 – 2033

REGULATION 18 CONSULTATION

OCTOBER 2018



The Draft Local Plan for Worthing Borough – What is it?

- The Draft Local Plan sets out the proposed strategy and policies to guide future development to 2033.
- Having identified the key issues facing the Borough this version of the Plan sets out how the Council thinks they can be addressed.
- The key challenge is to balance development against the limited land available whilst trying to ensure a good quality of life for existing and new residents.

The Draft Local Plan provides information about the key issues and challenges facing the Borough (Part 1).

It sets a vision of what kind of town Worthing wants to be by 2033. To deliver the vision and to provide a direction for the spatial strategy (where future development will go) and policies there are 20 strategic objectives (Part 1).

The strategic objectives aim to: enable healthier lifestyles and improve wellbeing; reduce deprivation; encourage effective low carbon and water efficient planning and design; deliver the homes that the community needs; reduce congestion; protect our valued green spaces, natural environment and heritage; enable the right skills and employment mix; and reinvigorate town and local centres.

Part 2 of the Draft Local Plan sets out the spatial strategy and the policies to deliver it.

The spatial strategy seeks to achieve the right balance between planning positively to meet the borough's development needs with the need to protect and enhance the borough's high quality environments and open spaces within and around the town.

The Proposed Sites

There are a number of sites that have been identified for future development. The plan includes 8 'Allocations' and 6 'Areas of Change'. The plan also includes 3 'Omission sites' which could be delivered if the identified constraints can be overcome. Part 3 provides detailed guidance on these sites and how we would like to see them developed.

We would encourage you to look at these sites to see how they may affect you in the future -see the map overleaf.

The Proposed Policies

In Part 4, we have set out the proposed detailed policies (25 of them) that new development will have to take account of. The policies are set out in the following sections:

Homes and Neighbourhoods – we are planning to deliver at least 4,000 new homes by 2033. These new homes include affordable homes and homes for older people and families. We need to ensure that our new homes are of a high quality design and meet the needs of our communities.

Sustainable Communities – our policies seek to help reduce deprivation and support the quality of community life. We need to ensure that we protect our valued open space and consider the health and well-being of our communities when planning for new development.

Local Economy – we aim to help ensure that our residents have the skills that existing and emerging businesses need. Policies will help ensure that our diverse local economy has the business space it needs in the places it wants to be. They also seek to ensure that our town and local centres are the best they can be.

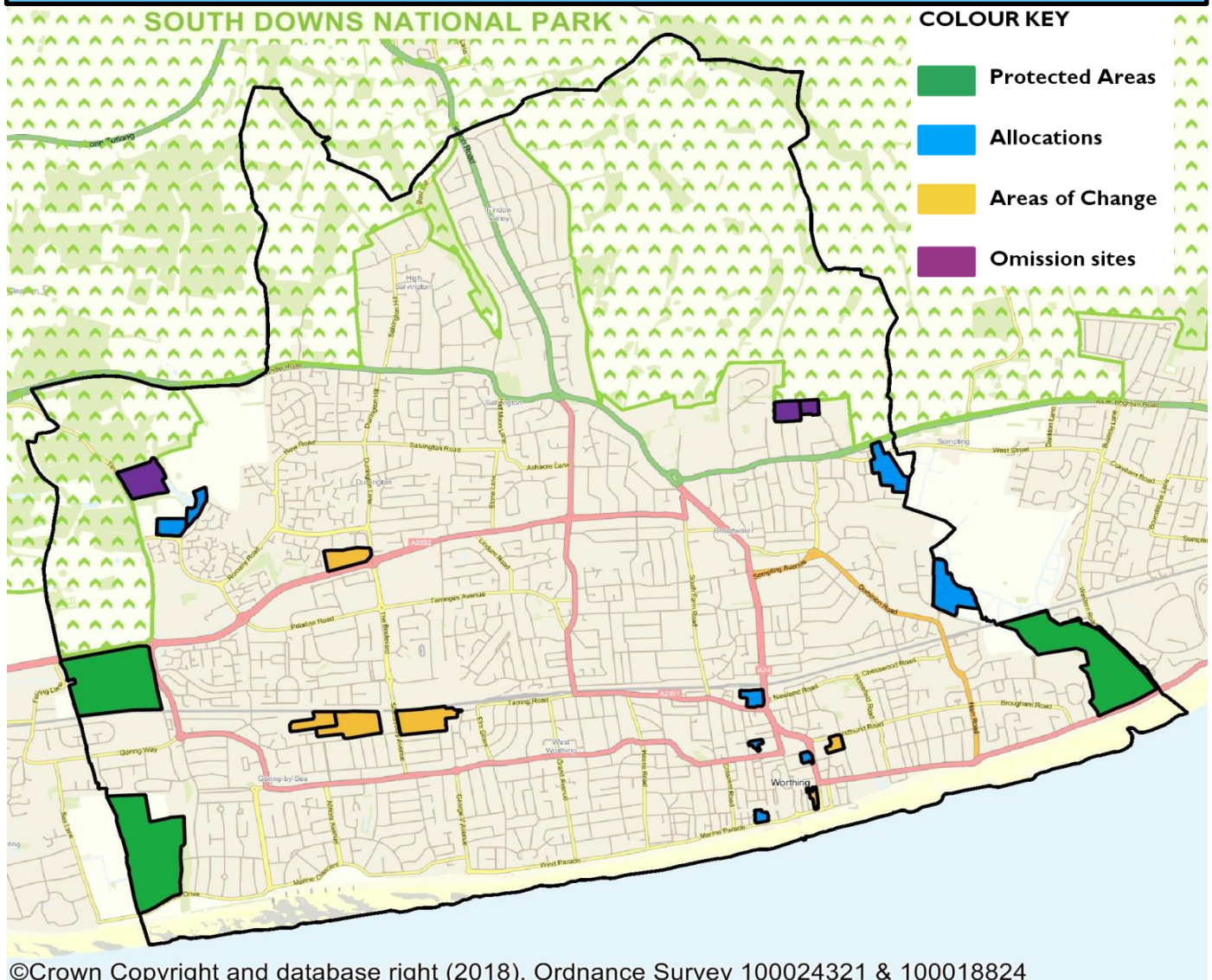
Historic Environment – our historic environment both built and natural, helps make Worthing what it is. Therefore, the policies need to protect and enhance those elements that we all value in a way that also meets the needs of our current communities.

Environment and Climate Change – a key challenge is how we meet our communities needs in a way that is sustainable and considerate of future generations. We need to ensure that our precious environmental resources are protected.

Connectivity – our policies seek to ensure developments provide for integrated, safe and sustainable transport to help reduce the need to travel, improve air quality, reduce congestion and promote active travel. They also seek to improve digital infrastructure coverage to allow all our businesses and local communities to be better connected.

The Sites

(For larger maps, see the Map Extract Supporting Document on the Local Plan webpage)



Have Your Say

You can view the Draft Local Plan, access comments forms and find out about the planned consultation events on our Local Plan page: www.adur-worthing.gov.uk/worthing-local-plan

You can also keep up to date by following the Council's social media pages:

Facebook: <https://www.facebook.com/AdurWorthingCouncils/>

Twitter: <https://twitter.com/adurandWorthing>

Please give us your views by 5pm on Wednesday 12th December 2018.

Email: worthinglocalplan@adur-worthing.gov.uk

Phone: 01273 263000

New Sites - If you are aware of any sites that may offer the potential for new development let us know. Visit the Strategic Housing Availability Assessment page on our Local Plan page and complete the relevant form.