

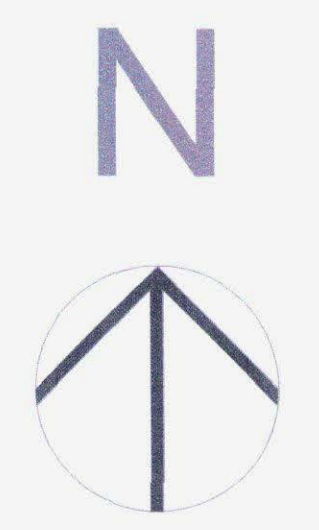
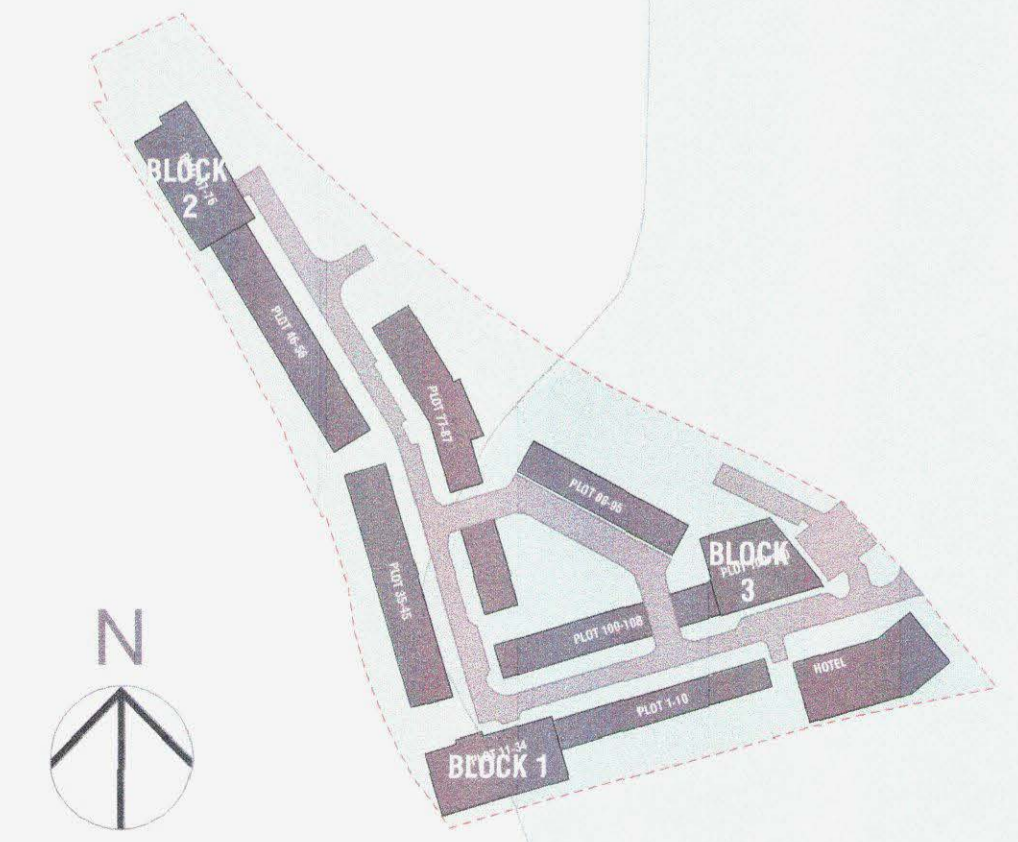
1006/10
Rec 00117



NOTE:
Planning permission was granted for the Adur Tidal Walls scheme after the outline approval for this site was granted. However, the precise and final position of the Walls is likely to require adjustment and minor realignments as the works are implemented. For these reasons the river frontage application site boundary and tidal wall boundary are currently not in the same position on the plans but will coincide and share a common boundary once the Tidal Wall are constructed.

- BOUNDARY TO RESERVED MATTERS APPLICATION
- BOUNDARY TO OUTLINE APPLICATION

DRAWING KEY



REVISIONS	NOTES	SR
B 06/01/17	Adjusted position of Plot 77 & 78, Indicated parking allocation & updated Red line to indicate Reserved matters and outline boundary	SR
A 10/11/16	Revised parking layout and layout of Northern block	SR

PLANNING



ROPETACKLE, SHOREHAM
PROPOSED GROUND FLOOR PLAN

